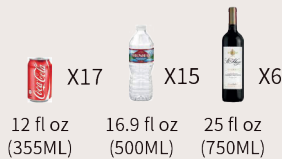
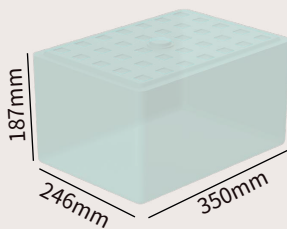
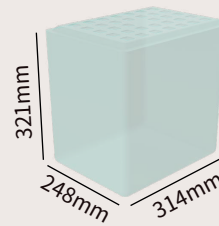


## SECX15



## SECX25



## Features

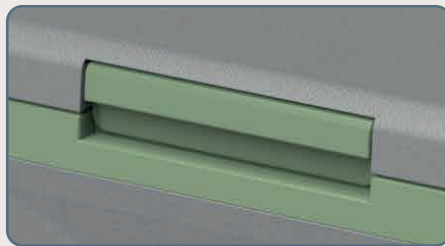
- Adjustable temperature from -20°C (-4°F) to 20°C (68°F) with high performance compressor.
- Tie down slots: keeps your cooler in place with optional tie down kits no matter how rough the road is (Tie down kits need to be purchased additionally).
- CFC free and great heat insulation, eco-friendly and save choice.
- With temperature memory function & car battery protection system to prevent the vehicle from running out of battery.
- Recessed handles are molded into the refrigerator, and make it easier to carry and transport the fridge.
- Specific parts: LED control panel, compact size & light weight, cup holders (SECX25).
- Fit Anywhere: Car/Jeep/Truck/Home/Dorm/Cottage/Garage/RV/Boat /Outdoor (DC/AC).
- Rugged design: Shockproof and durable design for handling rocky road. Incline Operation up to 45° angle for a short time.
- Quiet operation: less than 45db, just like living in a quiet suburb.

<b>MODEL:</b>	SECX15	SECX25
<b>TOTAL CAPACITY:</b>	15.6L/16Quarts/0.55Cu.Ft.	24.2L/26Quarts/0.85Cu.Ft.
<b>POWER SUPPLY:</b>	12/24V DC,100-240V AC	12/24V DC,100-240V AC
<b>RATED CURRENT:</b>	AC 1.2A-0.5A DC 5.0A/2.5A	AC 1.2A-0.5A DC 5.0A/2.5A
<b>RATED POWER INPUT:</b>	60W	60W
<b>FRIDGE DIMENSION (W X D X H):</b>	602*320*269mm 23 11/16*12 5/8*10 5/8 inch	602*334*414mm 23 3/4 *13 5/32*16 5/16inch
<b>PACKING SIZE (W X D X H):</b>	629*379*325mm 24 13/16*14 15/16*12 13/16 inch	629*393*469mm 24 13/16*15 1/2*18 1/2 inch
<b>NET WEIGHT:</b>	8.5kg/18.7lbs	10.6kg/23.4lbs
<b>GROSS WEIGHT:</b>	10.4kg/22.9lbs	12.8kg/28.2lbs
<b>FRIDGE/FREEZER (COMBINATION):</b>	-20~20°C (-4~68°F)	-20~20°C (-4~68°F)
<b>FCL QUANTITY:</b>	385/798/798	208/436/545(20/40/40'HQ)
<b>NOISE LEVEL:</b>	<45dB	<45dB

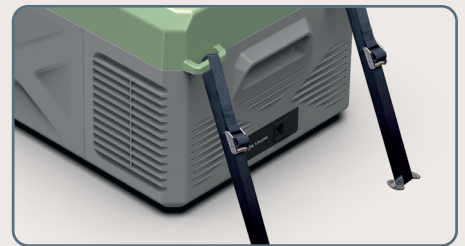
\*Due to product improvement, the technical information might be different from actual information, please refer to the rating label on the product. (Note:±3°C temperature difference is permitted)



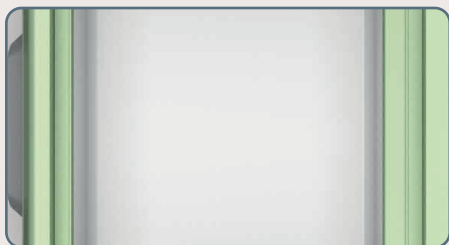
LED digital display



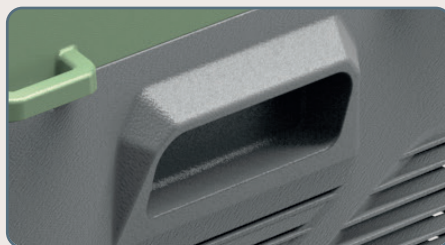
Durable door latch



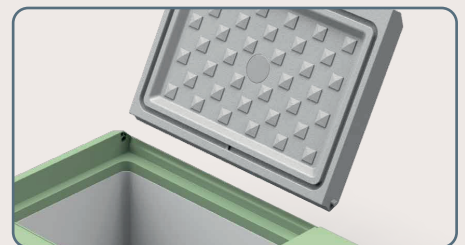
Tie down slots



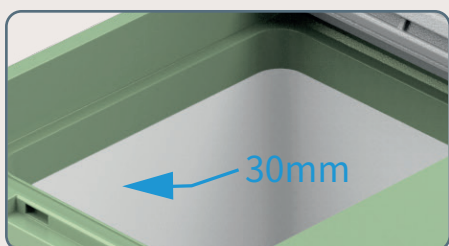
Fridge/freezer(2 in 1)



Recessed handle



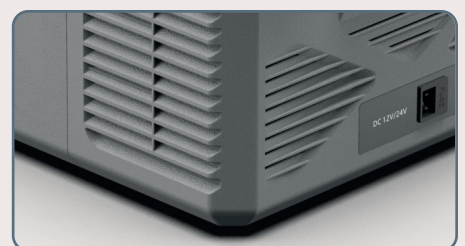
Removable door



Thick-wall insulation



Home/Car (Optional)



Heat Dissipation cover